

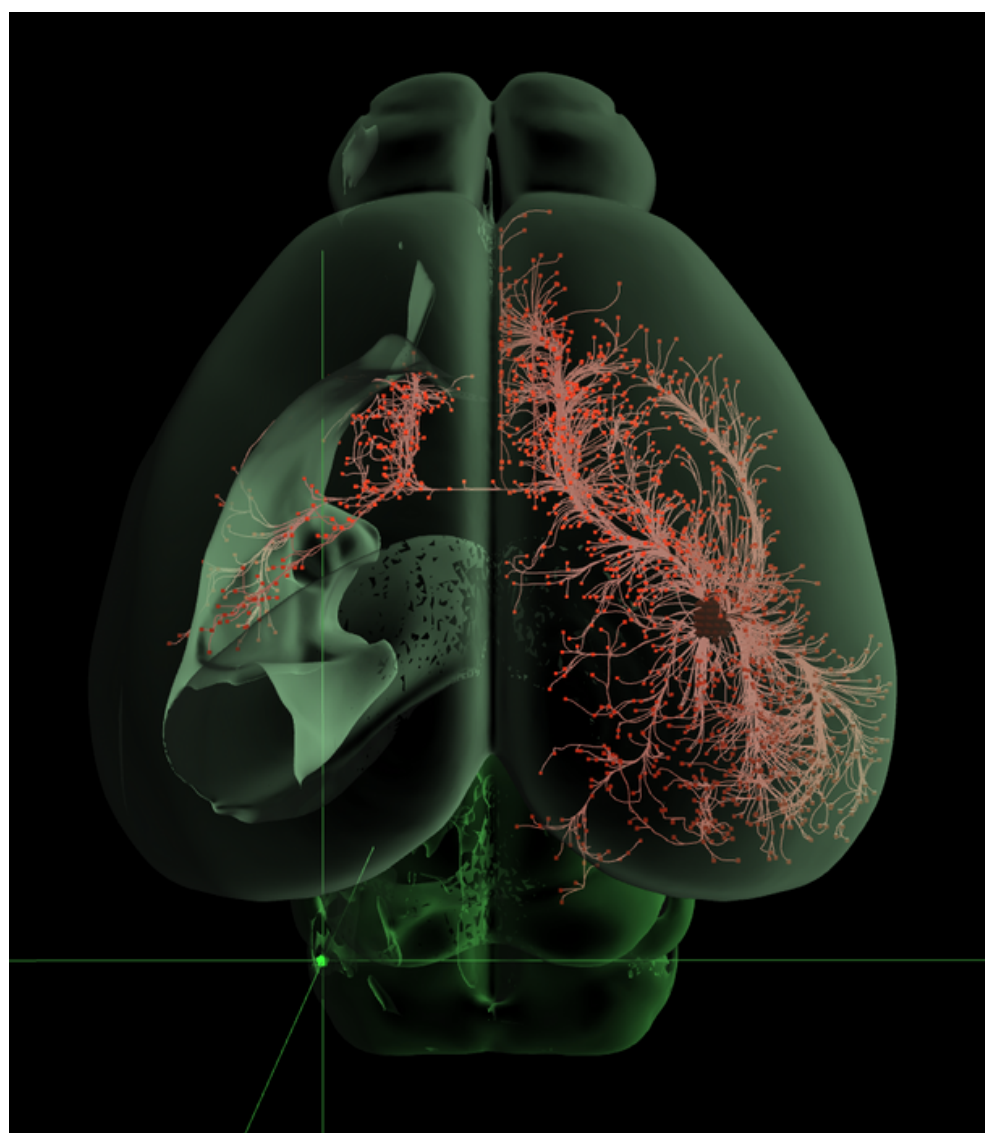
# PHD POSITION AVAILABLE

## IN THE NEW KLINGLER LAB



VIB-KU LEUVEN  
CENTER FOR  
BRAIN & DISEASE  
RESEARCH

# to investigate key steps of emotional circuit development.



ADAPTED FROM THE ALLEN BRAIN CONNECTIVITY ATLAS

We are seeking a highly motivated candidate interested in neurodevelopment and multi-omics approaches to investigate how different types of amygdala neurons are born, molecularly defined, integrated into functional circuits, and affected by environmental stress during development. The research project, under the supervision of principal investigator Esther Klingler, will focus on the development of emotional circuits combining experimental and computational approaches.

## WE OFFER

- The initial appointment is for one year and with the possibility of extension upon positive evaluation.
- An interdisciplinary environment with access to state-of-the-art technologies.
- Ph.D. students will get intensive and personalized supervision and will have access to extensive scientific and transferable skills training programs available through VIB and KU Leuven.
- The position is available from October 1st, 2023.

## WE ARE

Dr. Esther Klingler is starting up a new lab as of 1st October 2023 within the VIB-KU Leuven Center for Brain & Disease Research. The aim of the research group is to unravel developmental trajectories of emotional circuit neurons; more specifically the team will study the molecular trajectories of amygdala neurons during development.

Be part of a strong  
neuroscience  
community in the heart  
of Europe



LEUVEN BRAIN INSTITUTE

**JOIN US!**



[cbd.vib.be/careers](https://cbd.vib.be/careers)



[cbd.sites.vib.be](https://cbd.sites.vib.be)